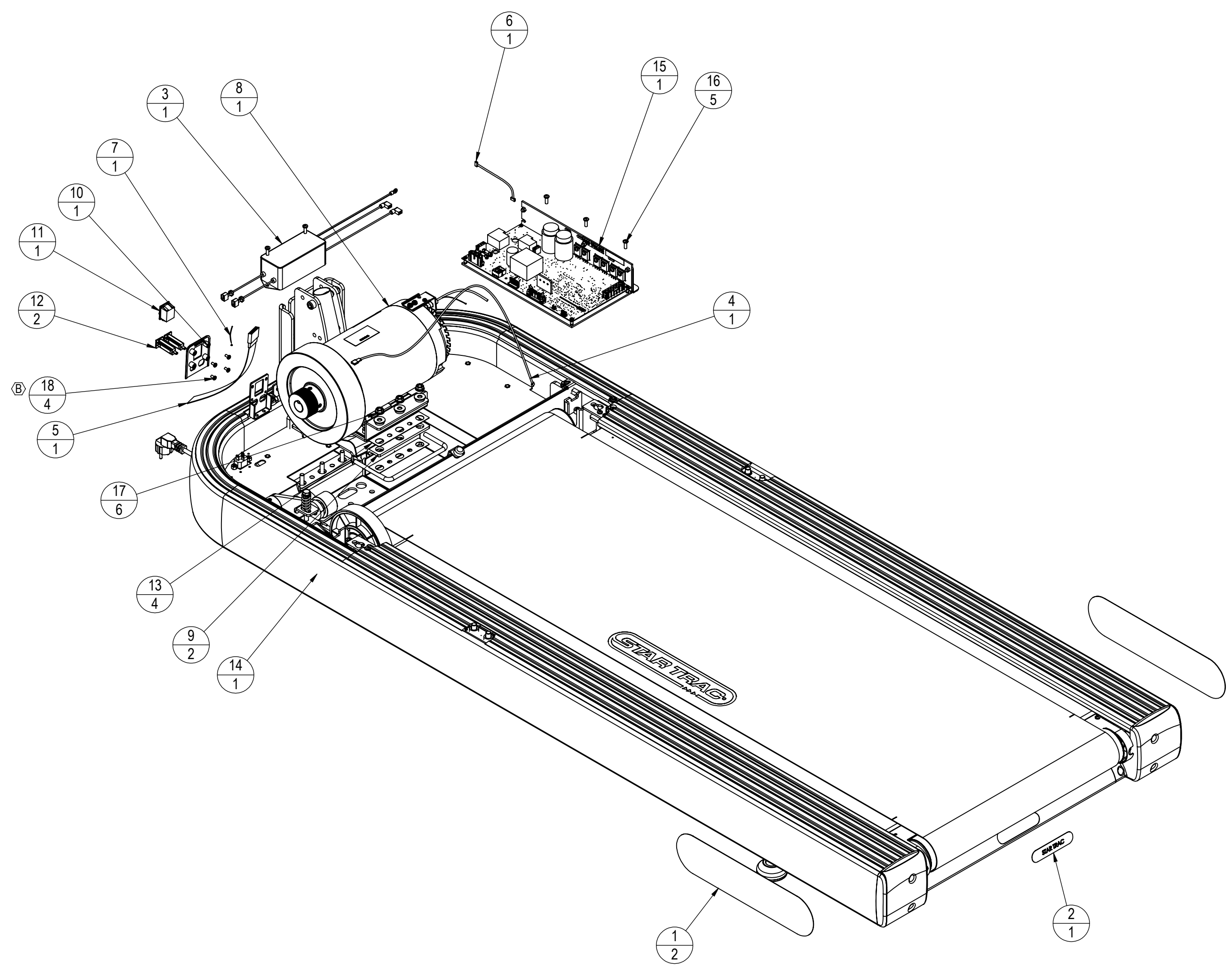


REVISION HISTORY				
REV	DATE	DESCRIPTION	ECO	BY
A	9/18/2007	PRODUCTION RELEASE	11717	SJ
B	6/21/2010	REMOVE STAR TRAC P/N: 740-6017 (1), 740-6019 (1), 740-6029 (1), & 740-6128 (4); CHG QTY OF STAR TRAC P/N: 740-6521 WAS: 12 IS: 4	13348	SCN



ITEM NO.	STAR TRAC P/N	PART NUMBER	DESCRIPTION	QTY.
1	050-2073	050-2073	LABEL, STAR TRAC, 15X3.55"	2
2	050-2113	050-2113	LOGO, REAR CROSS BAR, S-TR	1
3	440-0275	440-0275	FILTER, EMI/HARMONICS, 250V, CE	1
4	740-6013	740-6013	Assy, Cable, AC To MCB, Sport Tread	1
5	740-6022	740-6022	Assy, Cable, Main Interface, Lower	1
6	740-6025	740-6025	Assy, Cable, Ext DC Power, Sport Tread	1
7	740-6036	740-6036	Assy, Cable, Generic GND 2, Sport Tread	1
8	740-6050	740-6050	ASSY, MOTOR, AC 220V, S-TRc	1
9	740-6080	STDP2200	GASKET, MOTOR BRK INSULATOR	2
10	740-6081	STDP2600	BASE, BREAKER, W/INSERTS	1
11	740-6084	F17	SWITCH, ON/OFF, 250V 16A	1
12	740-6085	13-0009	BREAKER, 220V, 10A	2
13	740-6129	STDP2300 (2)	INSULATOR, MOTOR PAD, MYLAR, S-TRc	4
14	740-6146	740-6146	ASSY, ELEV & RUNNING SYS, 220V 10A	1
15	740-6153	740-6153	ASSY, MCB, AC220V, W/BRACKET, TRc	1
16	740-6512	GB818M5*15#2	SCREW, GB818M5*15	5
17	740-6520	GB6177M8CL2	NUT, GB6177M8CL2	6
18	740-6521	GB818M4*8#2	SCREW, GB818M4*8	4

NOTICE OF PROPRIETARY INFORMATION
 THIS DOCUMENT SHALL NOT BE REPRODUCED NOR SHALL THE INFORMATION CONTAINED HEREIN BE USED BY OR DISCLOSED TO OTHER EXCEPT AS EXPRESSLY AUTHORIZED BY UNISEN INC. D.B.A. STAR TRAC.

DOCUMENT STATUS:

NOTES:

CLASS OF WORK	UNLESS OTHERWISE SPECIFIED DIMS ARE IN mm. TOLERANCES FOR MEASURE OF LENGTH ARE:							ANGLES = ±2°
	0.5 to 3	>3 to 6	>6 to 30	>30 to 120	>120 to 400	>400 to 1000	>1000 to 2000	
FINE	±0.05	±0.05	±0.1	±0.15	±0.2	±0.3	±0.5	----
MEDIUM	±0.1	±0.1	±0.2	±0.3	±0.5	±0.8	±1.2	±2
COARSE	±0.2	±0.3	±0.5	±0.8	±1.2	±2	±3	±4
VERY COARSE	----	±0.5	±1	±1.5	±2.5	±4	±6	±8

MATERIAL
SEE BOM

FINISH
N/A

VENDOR: P/N: 740-6144

THIRD ANGLE PROJECTION		
DRAWN	INITIAL	DATE
CHECKED		
APPROVED		
U.O.M.	MM	

UNISEN, INC. DBA **STAR TRAC** 14410 Myford Road Irvine CA 92606

STARTRAC PART NO: **740-6144** REV: **B**

TITLE: **ASSY, BASE, 220V 10A, S-TRc-22**

SCALE: 1:7 | SHEET 1 OF 1 | SHEET SIZE: C